

GRILL ISLANDS

Fire up that steak year-round with these hard-wearing units. Includes 40,000 BTU stainless steel grill, single door for propane tank access, three piece concrete countertops and lintel

	width	depth	height	pcs./s.f.	s.f./pallet	pcs./pallet	lbs.
A	6'-11"	3'-0"	37"	-	-	-	2,500

	width	depth	height	pcs./s.f.	s.f./pallet	pcs./pallet	lbs.
B	6'-11"	3'-0"	37"	-	-	-	6,300



A MADOC GRILL ISLAND:
Bradstone Bluestone

See larger color swatches in back of catalog.



autumn cotswold



bluestone



york brown

NO CUTTING REQUIRED

Bradstone Madoc Grill Island Available in:

nicolock.com

VERONA GRILL ISLAND: Stone Ridge XL
Caramel Tan - Old Vienna Sunset Accent Line
6x9 Travertina Border
ISLAND: Golden Brown and Granite City Combo

B

A grill for all seasons

Features:

- Grill islands are available in either Verona wall or Madoc wall construction.
- Concrete countertops provide 13 square feet of surface area.
- Package includes:
40,000 BTU stainless steel built-in gas barbeque grill with four (4) 10,000 BTU cast stainless burners and an infrared burner. Dual-lined roll top hood has seamless welded edges

and heavy-duty thermometer. Includes 740 in. stainless steel cooking grates, warming rack, full size drip tray and electronic ignition. Grill Unit is 32" wide x 24" deep and can be ordered with either a natural or propane gas connection.

- Verona Grill Island available in Adobe, Crab Orchard, Golden Brown, Granite City and Oyster Blend

Verona Grill Island Available in:



adobe blend



bluestone



crab orchard blend



golden brown blend

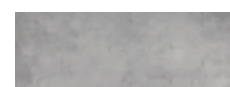


granite city blend



oyster blend

See larger color swatches in back of catalog.



bluestone



Gironde

Selections available for Countertops: